

CRE



4/45 Ritchard Avenue Coogee NSW

2  **1**  **1** 

Kick back, relax and soak up the panoramic 180-degree views stretching from Wedding Cake Island over Coogee Valley from the stylish surrounds of this boutique apartment just down from Clovelly village. Holding the best position in a 1930s Art Deco block of only four, the top floor apartment is wrapped in huge picture windows framing the captivating vista that's beautiful by day and magical by night. With only one common wall and a standalone lock-up garage on title, the two-bedroom apartment offers the best of beachside living and urban convenience just 450m to Clovelly Road's cafes, bakeries and Pilates studios and 1km down to the north end of the beach and the landmark Coogee Pavilion.

- + Never-to-be-built-out ocean and valley views
- + Quiet set back from the street in a block of 4

Type : Apartment

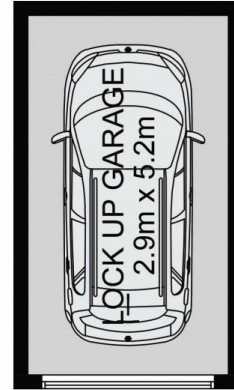
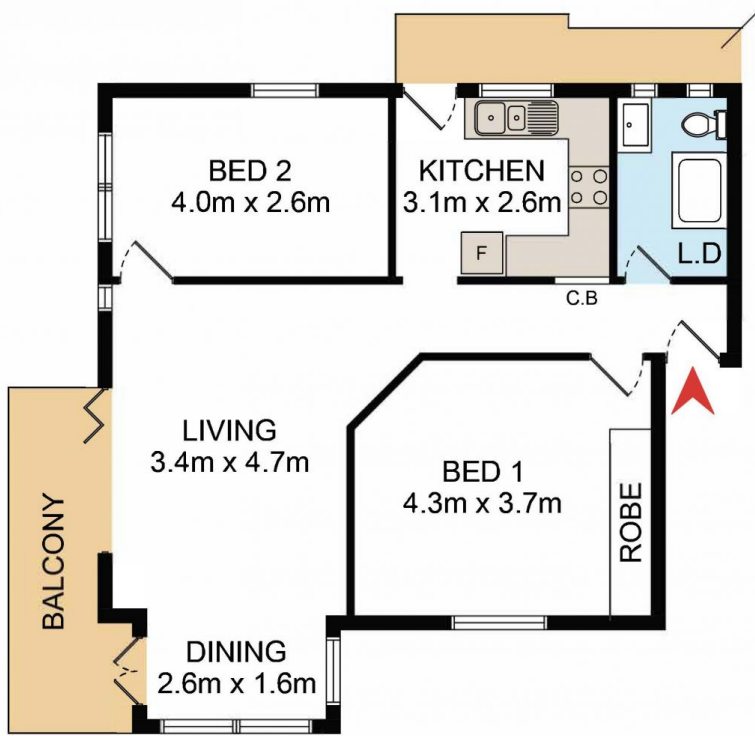
View : <https://www.coogee realestate.com.au/sale/nsw/eastern-suburbs/coogee/residential/apartment/8136195>



James Giltinan
02 9665 3341

[For full version visit the website](https://www.coogee realestate.com.au)

<https://www.coogee realestate.com.au>



DISCLAIMER: THIS IS FOR ILLUSTRATIVE PURPOSES ONLY.
ALL DIMENSIONS ARE APPROXIMATE AND IT DOES NOT
CONSTITUTE PART OF ANY LEGAL DOCUMENTS.

4/45 Ritchard Ave

Coogee