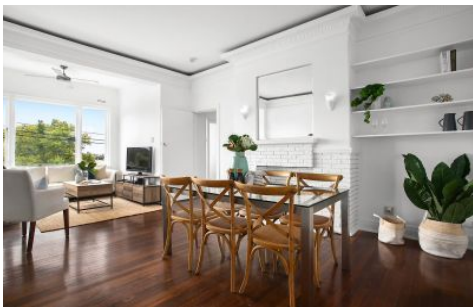


CRE



1/102 Alison Road Randwick NSW

2  1  1 

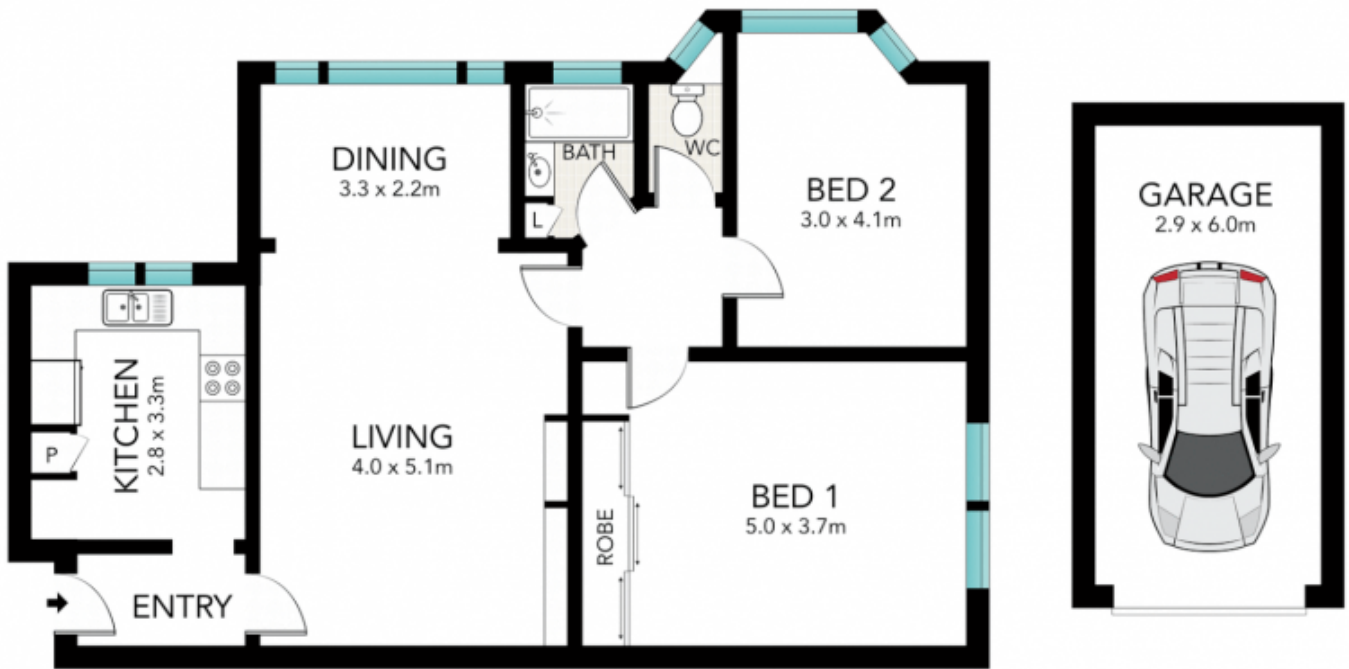
With its elegant proportions, Ornate ceilings and panoramic views over Royal Randwick Racecourse, this boutique Art Deco apartment presents an ideal alternative to a semi just across from the Wansey Road light rail stop, offering fantastic location between Randwick village and Centennial Park, it is 450m to Belmore Road shops and easy walking distance to UNSW, the hospital precinct and The Spot's dining hub.

- Timber flooring throughout, elegant ornate ceilings
- Unobstructed views over the racecourse
- 2 large bedrooms, 1 with built-ins and 1 with racecourse views
- Living room anchored by a feature decorative fireplace,
- Bright updated gas kitchen with dishwasher
- Lovely bathroom and separate toilet
- Auto lock-up garage on title plus common storage area

View : <https://www.coogeeestate.com.au/lease/nsw/eastern-suburbs/randwick/residential/apartment/8039408>



Catherine Cala
02 9665 3341



Scale in metres. Indicative only. Dimensions are approximate. All information contained herein is gathered from sources we believe to be reliable. However, we cannot guarantee its accuracy and interested persons should rely on their own enquiries.

1/102 Alison Road, Randwick