

CRE



6 Silver Street Randwick NSW

4 🛏 3 🚿 1 🚗

This double-fronted Victorian Italianate residence is one of only a handful of surviving 1890s mansions in the heart of Randwick town centre. The architect-renovated home proudly showcases the grand proportions and refined craftsmanship of its heritage while the contemporary rear has been opened out and extended to embrace an alfresco entertainer's haven. With Belmore Road's village hub at the top of the street, this blue-chip location is just one block to the UNSW and PoW Hospital precinct and 600m to UNSW High Street light rail stop for an easy trip into the city. Walk to Royal Randwick Racecourse and The Spot's celebrated dining hub.

View : <https://www.coogeerealestate.com.au/lease/nsw/eastern-suburbs/randwick/residential/house/6887122>

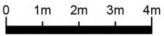
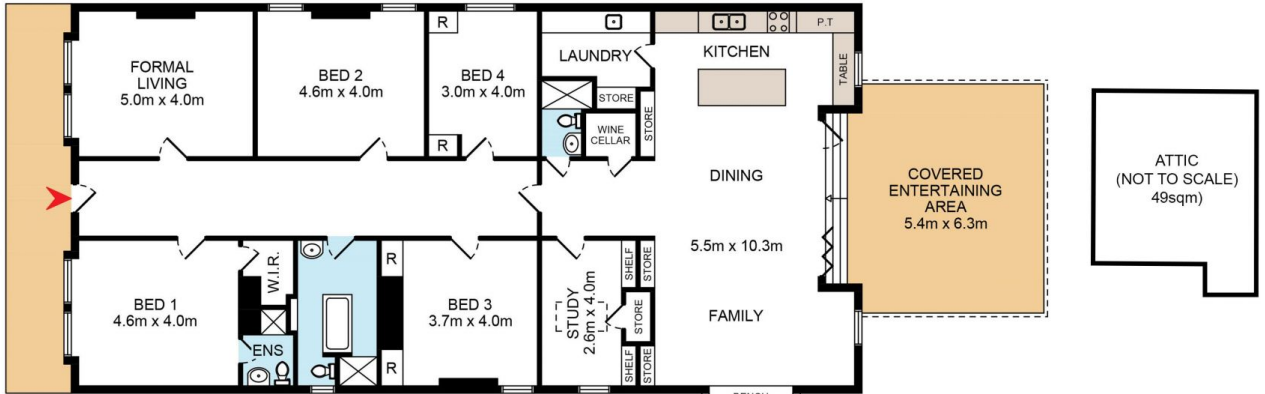


Phoebe Moeller
02 9665 3341

- Four large bedrooms, two with built-ins, main with ensuite and walk-in robe
- Large family/dining with vaulted ceilings and French doors to entertaining area



SITE PLAN (NOT TO SCALE)



DISCLAIMER: THIS IS FOR ILLUSTRATIVE PURPOSES ONLY.
 ALL DIMENSIONS ARE APPROXIMATE AND IT DOES NOT
 CONSTITUTE PART OF ANY LEGAL DOCUMENTS.

6 Silver Street

Randwick