

# CRE



## 3B/4 Bligh Place Randwick NSW

2 1 1

Occupying a quiet rear corner setting in the popular El Dorado building. Capturing views over the pool and natural sandstone cliff face from its private third floor setting, the spacious two bedroom apartment is close to Clovelly Road cafés and Frenchmans Road's tapas bars and delis are just around the corner and it's easy walking distance to Queens and Centennial Parks.

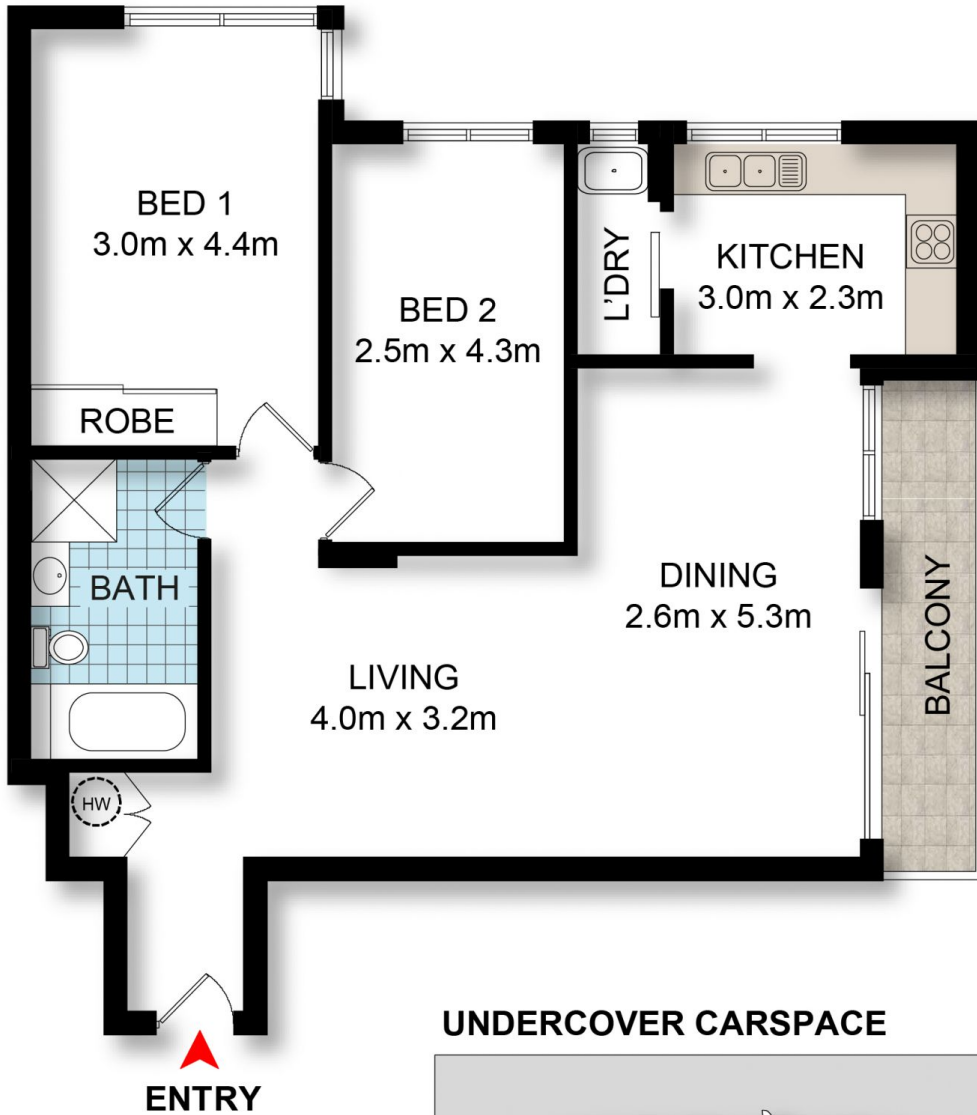
**View** : <https://www.coogeeestate.com.au/lease/nsw/eastern-suburbs/randwick/residential/apartment/6777118>

### Features:

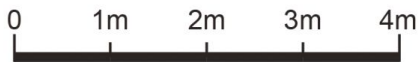
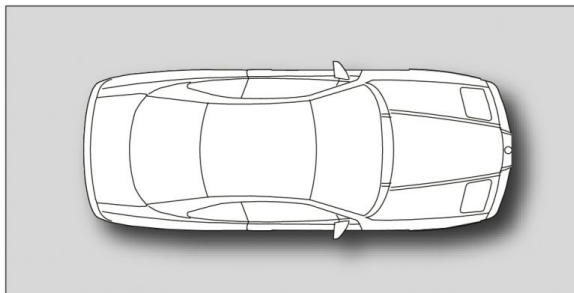
- Freshly paint & brand new carpet throughout
- Spacious glass-fronted living and dining with a balcony
- Tidy modern kitchen
- Double bedrooms, main with built-ins
- Neat bathroom
- Secure undercover parking
- Internal laundry



**Phoebe Moeller**  
02 9665 3341



**UNDERCOVER CARSPACE**



DISCLAIMER: THIS IS FOR ILLUSTRATIVE PURPOSES ONLY.  
 ALL DIMENSIONS ARE APPROXIMATE AND IT DOES NOT  
 CONSTITUTE PART OF ANY LEGAL DOCUMENTS.

**3B/4 Bligh Place,**

**Randwick**