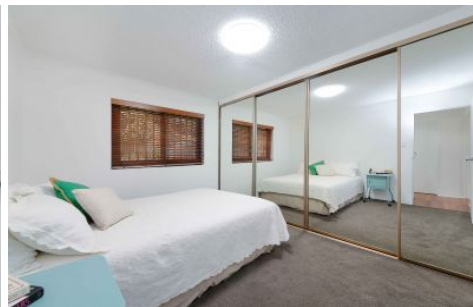


CRE



1/1A Leeton Avenue Coogee NSW

2  1  1 

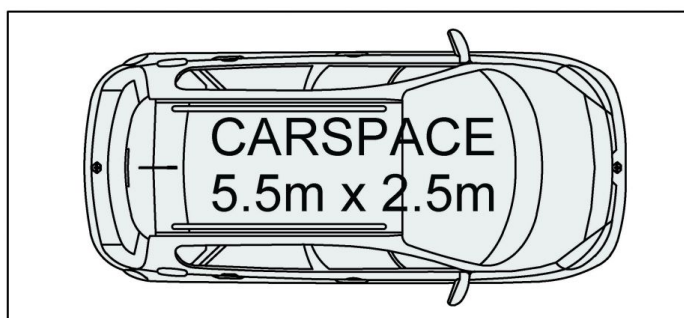
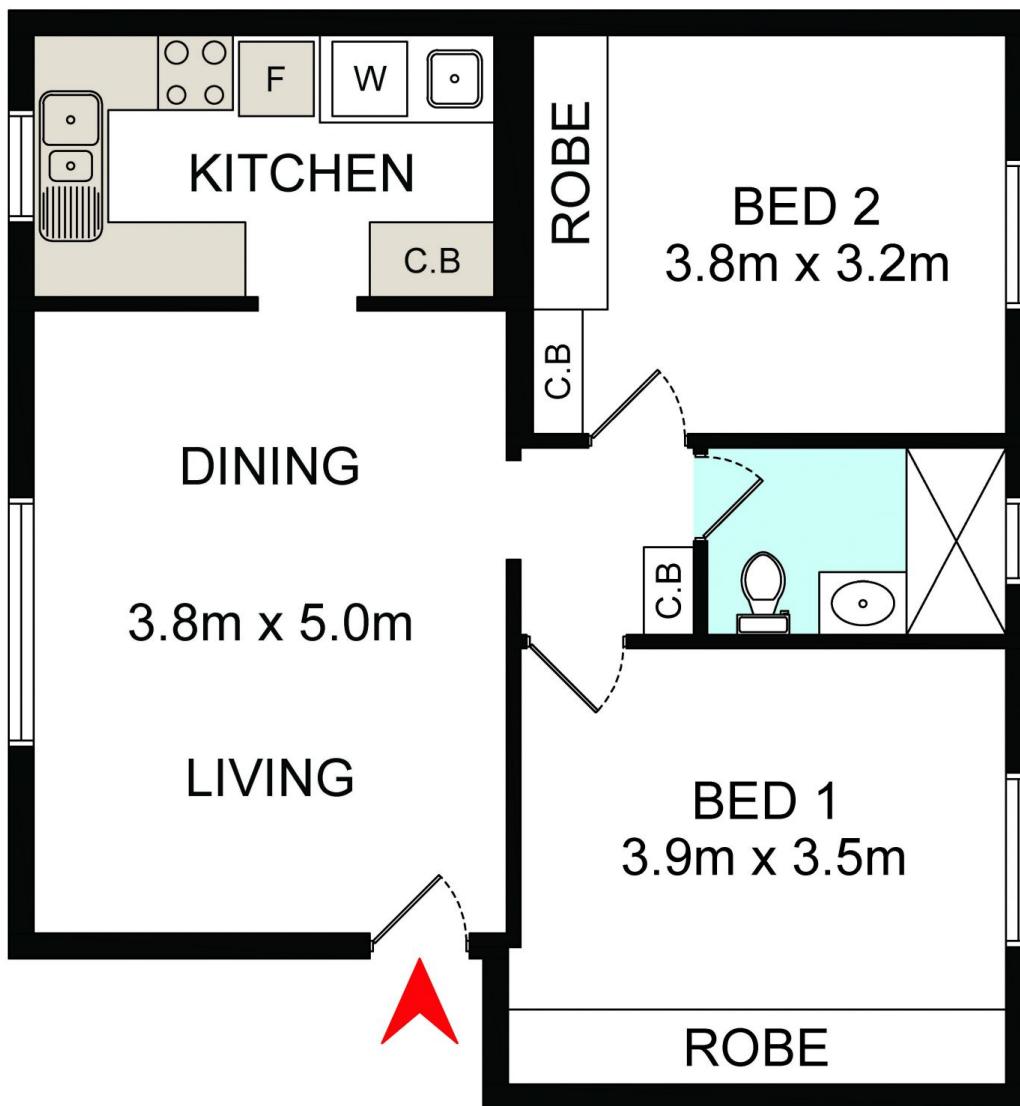
A quiet setting at the end of a cul-de-sac a short walk to Coogee Beach and just a short stroll to Clovelly Village cafes and eateries. Positioned on the first floor of a well-kept security block with Bardon Park at the end of the street, the freshly schemed apartment is presented in immaculate condition.

- + 2 double beds with built-ins
- + Updated, sparkling fresh bathroom
- + Spacious living and dining featuring polished floorboards
- + Fresh modern kitchen and laundry
- + Undercover parking
- + Secure block, one flight of stairs and security intercom
- + Walk to the sand, surf, beach cafes and ocean parkland

View : <https://www.coogee realestate.com.au/lease/nsw/eastern-suburbs/coogee/residential/apartment/5903651>



Asli Ekinci



DISCLAIMER: THIS IS FOR ILLUSTRATIVE PURPOSES ONLY.
ALL DIMENSIONS ARE APPROXIMATE AND IT DOES NOT
CONSTITUTE PART OF ANY LEGAL DOCUMENTS.



1/1A Leeton Street

Coogee