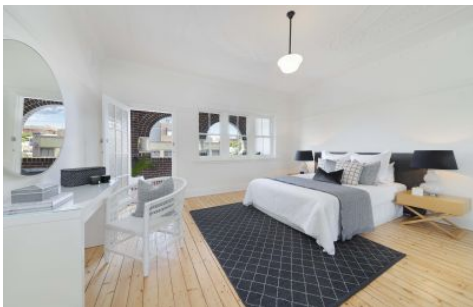


CRE



1/222-226 Clovelly Road Coogee NSW

3  1 

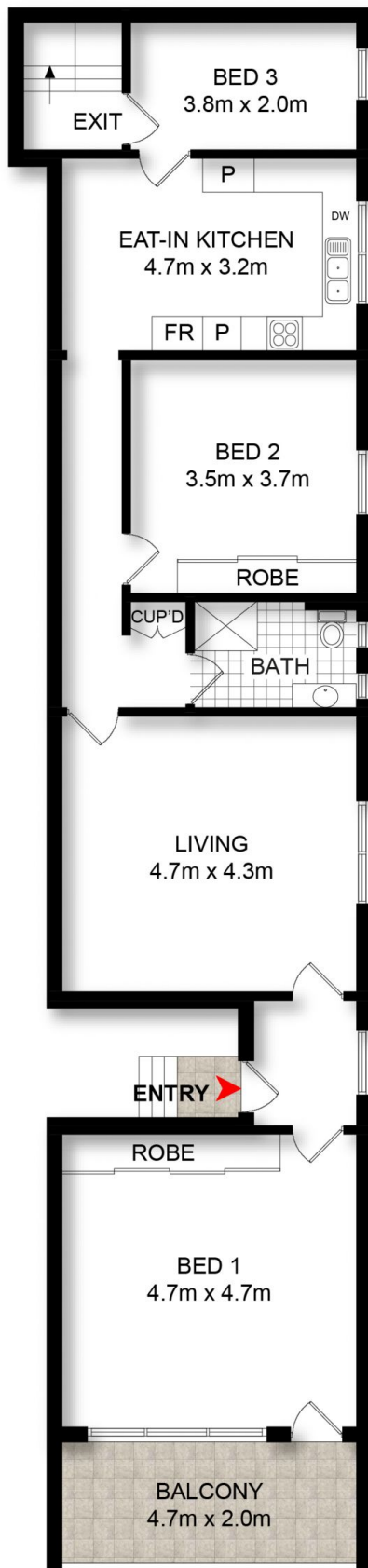
Right on the cusp of Clovelly, this semi-like Art Deco apartment offers the ultimate in relaxed coastal living, a breezy stroll down to Clovelly Beach and the coast walk to Bronte and Tamarama. One of only three in the boutique 'Hilltop', the newly renovated apartment takes its design cues from the streamlined minimalism of Scandinavian style with elegant period features giving it a mood of timeless elegance. Kick back, relax and enjoy Clovelly's laidback lifestyle a short walk to Gordons Bay with cafes and delis at the doorstep.

- + Beautifully renovated interiors with a fresh beach vibe
- + 3 bedrooms, 2 with built-in robes, king sized master bed
- + Deep north-facing verandah with elegant wide arches
- + Spacious living room, ornate ceilings, polished floorboards
- + Large eat-in Caesarstone gas kitchen, soft-close

View : <https://www.coogee realestate.com.au/sale/nsw/eastern-suburbs/coogee/residential/apartment/5903508>



James Giltinan
02 9665 3341



DISCLAIMER: THIS IS FOR ILLUSTRATIVE PURPOSES ONLY.
 ALL DIMENSIONS ARE APPROXIMATE AND IT DOES NOT
 CONSTITUTE PART OF ANY LEGAL DOCUMENTS.

1/222-226 Clovelly Road,

Coogee