

CRE



4/153-161 Coogee Bay Road COOGEE NSW

3 2 1

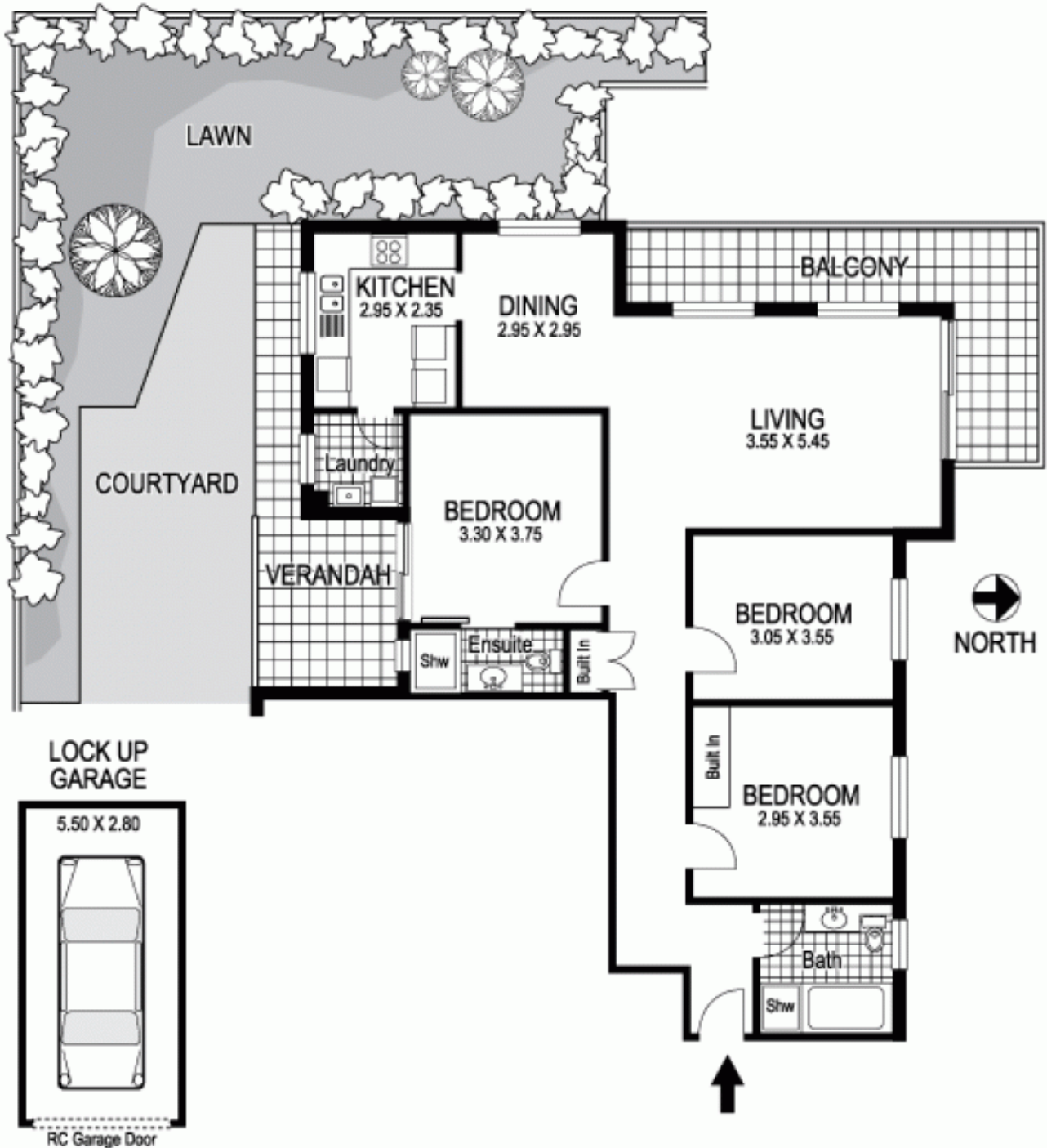
Secluded to the rear of Pacific Views, this peaceful three-bedroom apartment's oversized layout, deep terraces and direct level access to common gardens make it an appealing alternative to a semi. Set amid tropical palm-framed gardens in secure block of 15, it offers superb scope for transformation. Just 500m to vibrant beachfront attractions, it's walking distance to The Spot's dining hub and features a lock-up garage and lift access.

- Rear garden setting, spacious villa-like layout
- 3 double bedrooms, 2 bathrooms, main ensuite
- Free flowing living and dining, deep terraces
- Separate kitchen with an adjoining laundry room
- Direct level access to a common courtyard
- Lock-up garage, visitor parking, security intercom
- Walk to buzzing village life, schools and shops
- Approx 124sqm of living space, huge potential

View : <https://www.coogeeestate.com.au/sale/nsw/eastern-suburbs/coogee/residential/unit/5903074>



James Giltinan
02 9665 3341



4 / 153-161 Coogee Bay Road COOGEE "PACIFIC VIEWS"

Plans shown are for presentation purposes only and are not part of any legal document or title and are subject to errors, omissions, inaccuracies and they should not be used as sole and/or accurate reference for purchasing decision. Interested parties should make their own enquiries using other sources supplied. Dimensions shown on the plans are approximate values in length by width. Illustration by Racul Isidro 04111 28500.