

CRE



7/10 Moira Crescent RANDWICK NSW

2  1 

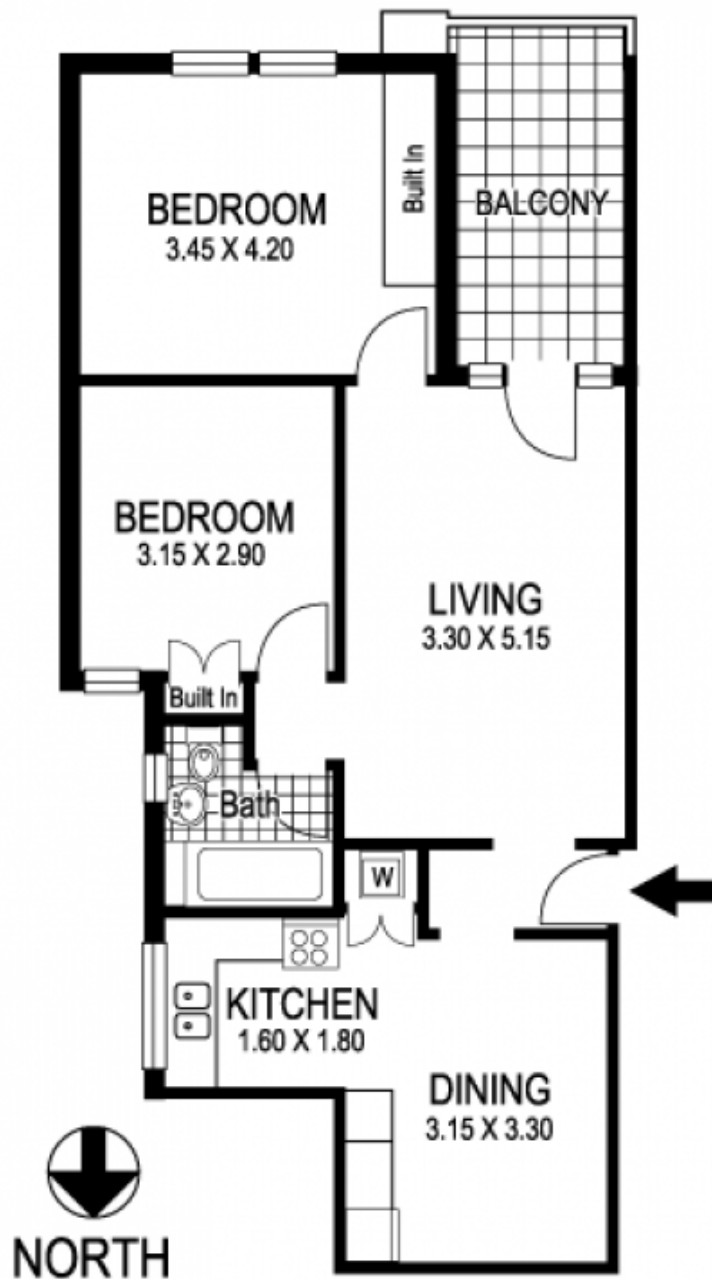
Tastefully updated retaining its inherent Art Deco charm, this chic boutique apartment is tucked away in a peaceful enclave just behind Clovelly village. Set on the mid floor of the beautifully maintained 1927 'Claircourt', it's positioned in a heritage-conservation street located between Clovelly and Coogee Beaches. A classic layout, refined features and loggia-style balcony combine to create a wonderful lifestyle purchase with access to a common roof terrace with sweeping ocean views.

View : <https://www.coogeerealestate.com.au/sale/nsw/eastern-suburbs/randwick/residential/unit/5903041>



James Giltinan
02 9665 3341

- Elegant secure foyer, block of 12, generous layout
- Entry hall, large dine-in gas kitchen, hidden laundry
- Inviting living room, high ornate ceilings, picture rails
- 2 double beds, main with built-ins & leadlight windows
- Deep private balcony - perfect for alfresco dining
- Chic new bathroom with a bath, original features
- Common rooftop, views over Wedding Cake Island



7 / 10 Moira Crescent
RANDWICK

"CLAIRCOURT"

© Dimensions shown on plans are approximate values in L x W
Colour formulas and area coding are subject to copyright
Illustration by Raoul Isidoro 04111 28500

Plans shown are for presentation purposes only and are not part of any legal document or title
and are subject to errors, omissions, inaccuracies and they should not be used as sole and/or accurate
reference for purchasing decision. Interested parties should make their own enquiries using other sources supplied.