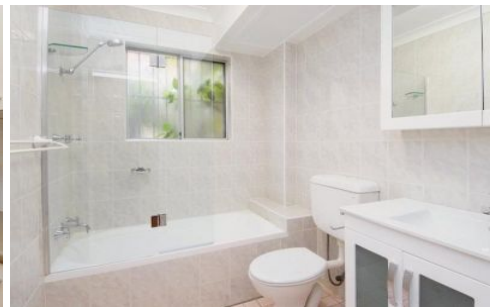


CRE



1/20 Abbott Street COOGEE NSW

2  1  1 

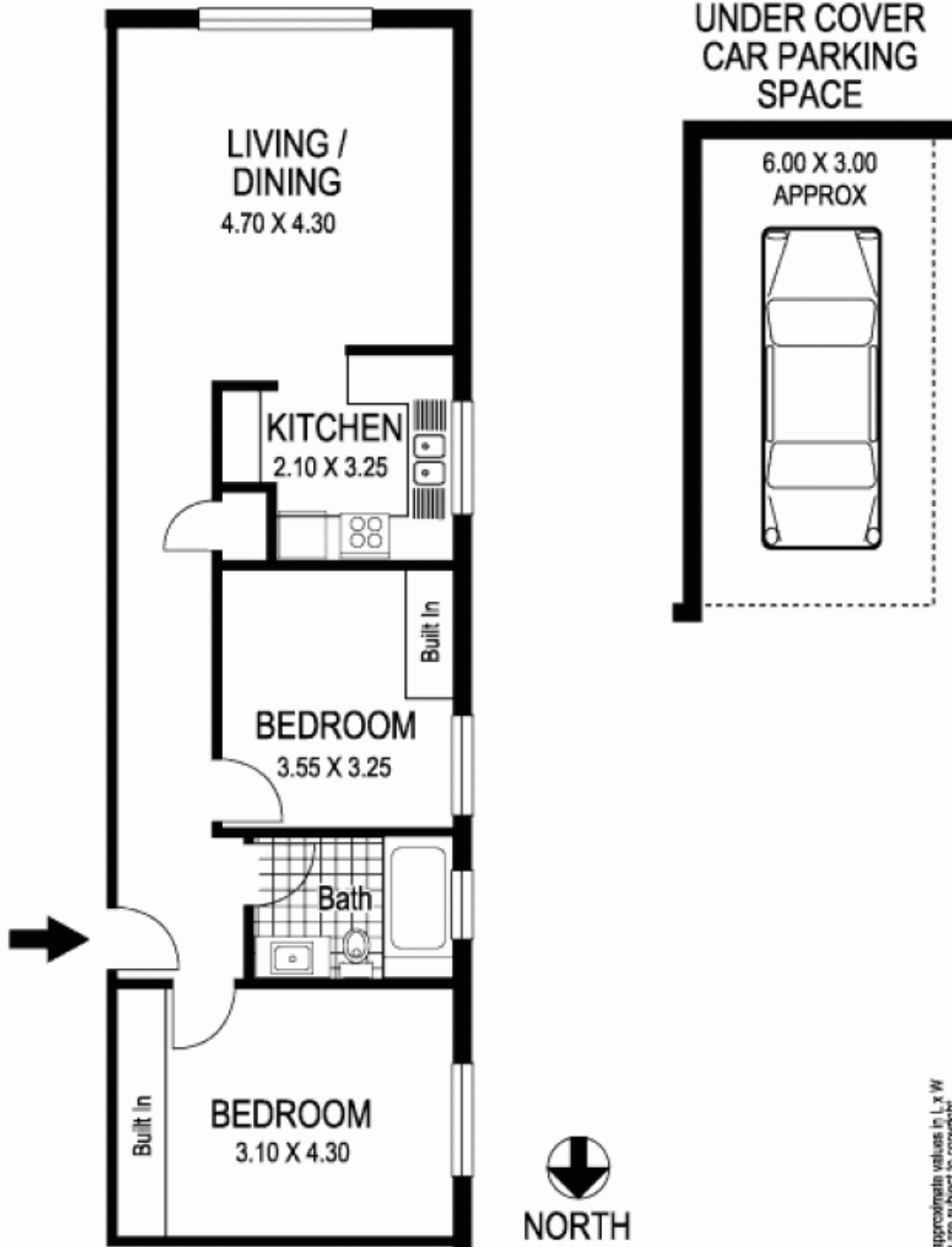
Tucked away in a tree-lined street on the edge of Bardon Park, this newly refreshed apartment is positioned on the ground floor of a well-maintained block of 15. Presented in immaculate condition with freshly schemed interiors and undercover parking on title, it offers a fabulous lifestyle purchase setting close to the beachfront, marine parkland and the coastal walk. A tranquil treescape outlook and easy level access adds to the appeal of this superb Coogee apartment.

- Freshly schemed interiors with only one common wall
- New Woodline Premier walnut floors & quality carpeting
- 2 double bedrooms with built-ins, large master bed
- Open living/dining area with a leafy outlook
- Smart modern kitchen, sparkling fresh bathroom
- Share laundry with room for own machines & storage
- Excellent investment prospect, strong rental demand

View : <https://www.coogeeestate.com.au/sale/nsw/eastern-suburbs/coogee/residential/apartment/5903023>



James Giltinan
02 9665 3341



1 / 20 Abbott Street COOGEE

Plans shown are for presentation purposes only and are not part of any legal document or title and are subject to errors, omissions, inaccuracies and they should not be used as sole and/or accurate reference for purchasing decision. Interested parties should make their own enquiries using other sources supplied.

© Dimensions shown on plans are approximate values in L x W
Colour formulas and area coding are subject to copyright
Illustration by Raoul Isidro 0411 28500