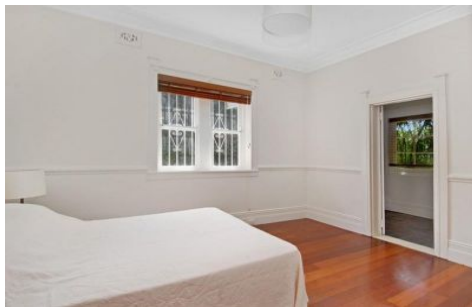


CRE



1/2 Kidman Street COOGEE NSW

2 1 2

Newly refreshed interiors, a semi-like layout and chic character details add to the appeal of this spacious Art Deco apartment. Set on the ground floor of the boutique Milton Hall, it has been tastefully updated with bright and airy living spaces enhanced by polished timber floors and high ornate ceilings. Featuring direct access to a patio and common courtyard, it features the bonus of a huge double garage. Wrapped in windows on three sides with only one common wall, it's a brief stroll to the sand, surf and beachside cafes.

Features Include

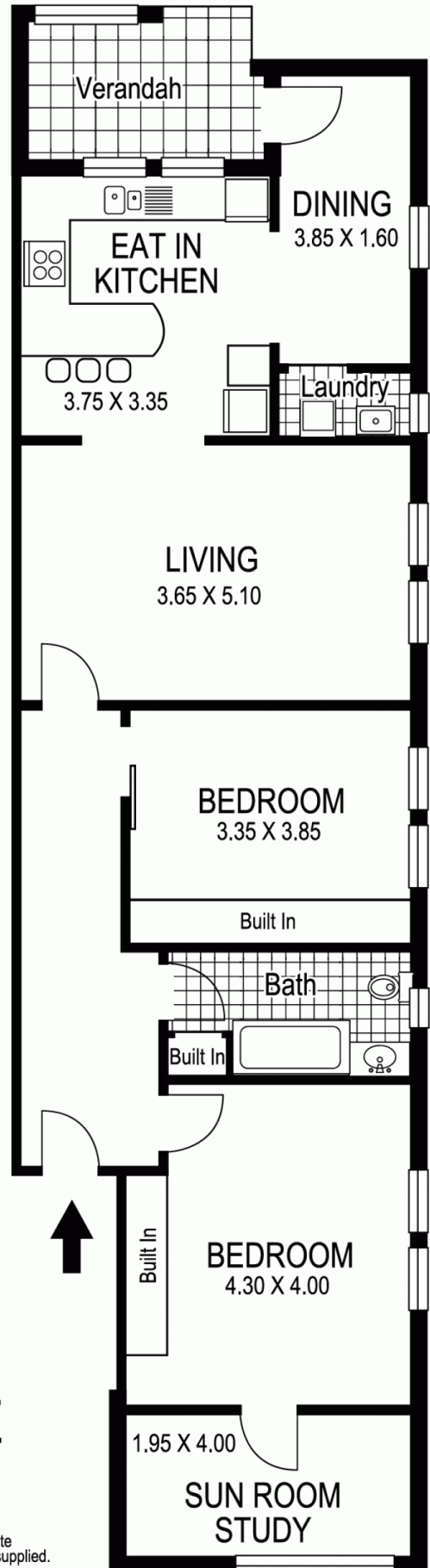
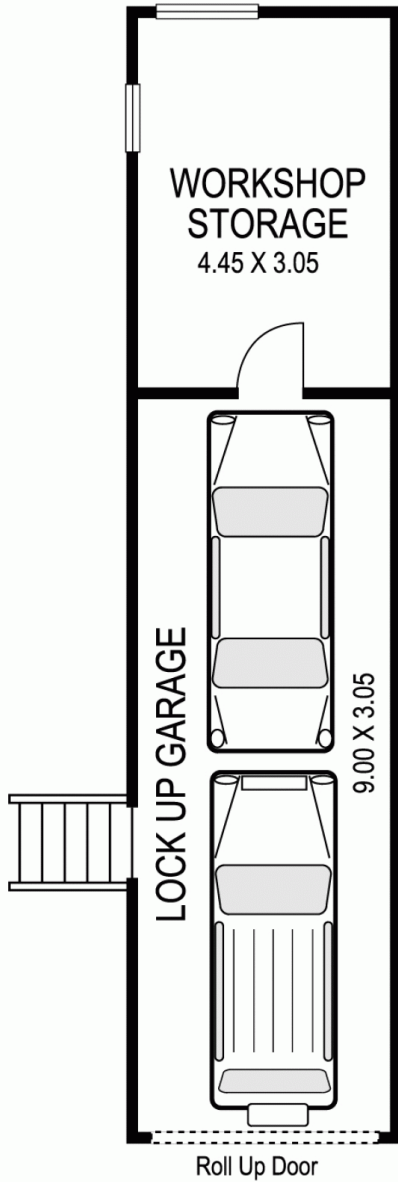
- Charming block, secure terrazzo entry, easy level access
- 2 double beds with built-ins plus a sunroom or ideal study
- Spacious living room, newly painted, lovely high ceilings
- Large modern gas kitchen, dishwasher, breakfast bar

View : <https://www.coogeeestate.com.au/sale/nsw/eastern-suburbs/coogee/residential/apartment/5903011>



James Giltinan
02 9665 3341

COMMON COURTYARD



© Dimensions shown on plans are approximate values in L x W
Colour formulas and area coding are subject to copyright
Illustration by Raoul Isidro 04111 28500

1/2 Kidman Street COOGEE
"MILTON HALL"

Plans shown are for presentation purposes only and are not part of any legal document or title and are subject to errors, omissions, inaccuracies and they should not be used as sole and/or accurate reference for purchasing decision. Interested parties should make their own enquiries using other sources supplied.