

CRE



14 Leeton Avenue COOGEE NSW

5 🚗 2 🚿 1 🚗

Newly refurbished to maximise sunlight and create a seamless transition between indoors and out, this stylish two storey beachside home is perfectly configured for family living. Set on the high side of a whisper-quiet and tightly held cul-de-sac surrounded by quality homes, it's just a short walk through Bardon Park to the sand, surf and beachfront cafes. Perfect for the large family with a flexible layout and generous accommodation, it opens out to a private suntrap entertainer's courtyard and sparkling mosaic-tiled pool.

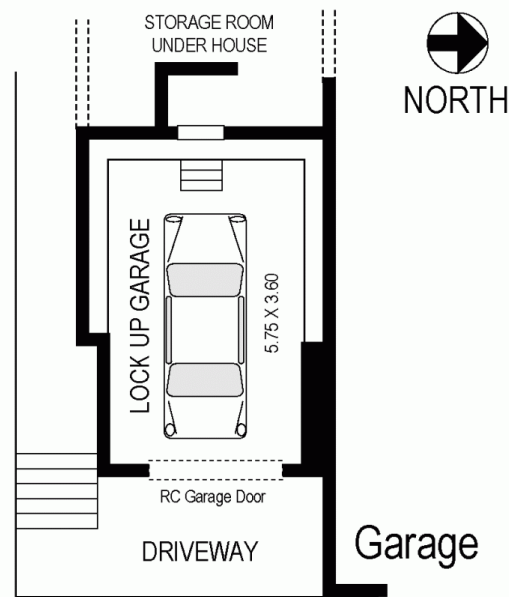
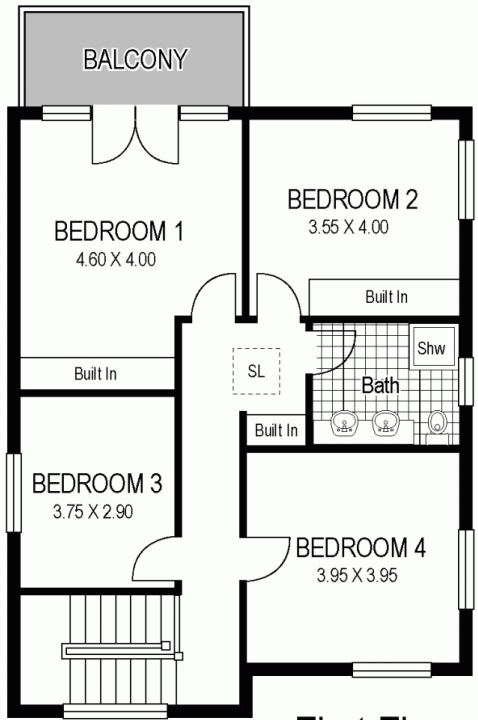
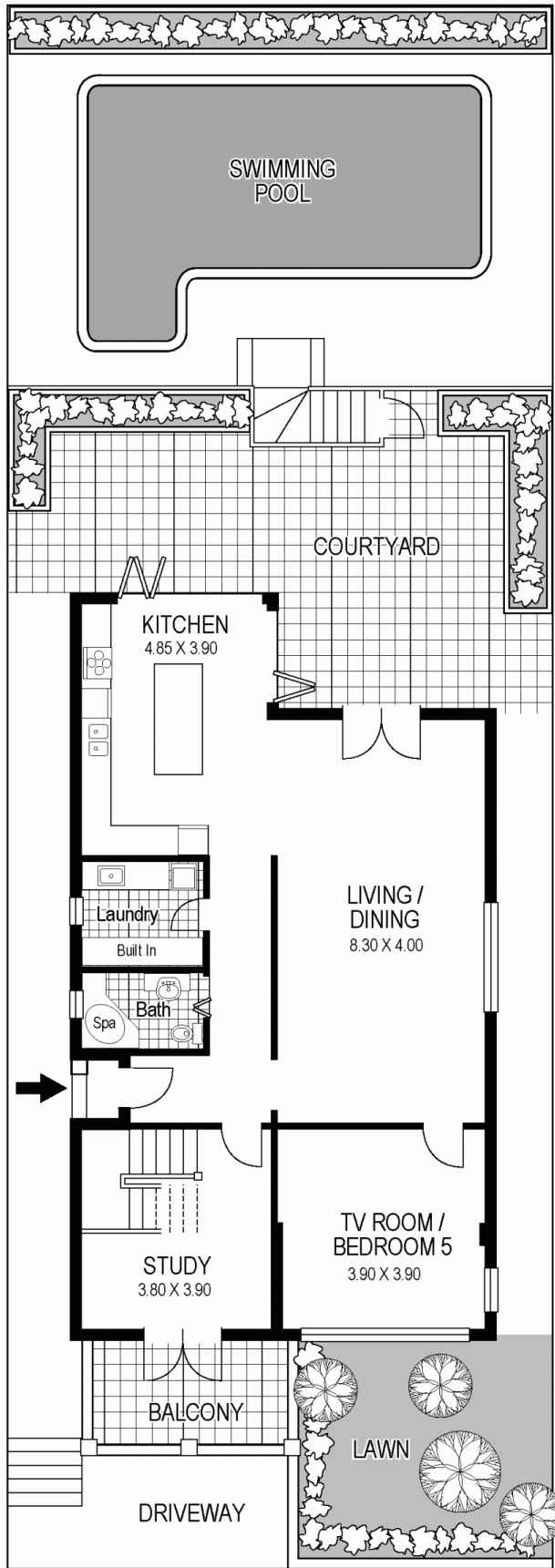
- > Sunlit open living & dining, polished Brushbox floors, R/C Air Con
- > Designer CaesarStone island kitchen, Blanco gas cooker
- > Wall-to-wall bi-fold doors to the courtyard & sunny pool
- > 5 double beds + a study with deep verandah, 2 with b/ins
- > Master with extensive built-ins & deck overlooking the

Land Size : 338 sqm
View : <https://www.coogeerealestate.com.au/sale/nsw/eastern-suburbs/coogee/residential/house/5902965>



James Giltinan
02 9665 3341

**14 Leeton Avenue
COOGEE**



© Dimensions shown on plans are approximate values in L x W
 Colour formulas and area coding are subject to copyright
 Illustration by Architectural Perspectives 0411 28500
 Plans shown are for presentation purposes only and are not part of any legal document or title
 and are subject to errors, omissions, inaccuracies and they should not be used as sole and/or accurate
 reference for purchasing decision. Interested parties should make their own enquiries using other sources supplied.