

# CRE



## 61 Mount Street COOGEE NSW

3 1

Beautifully proportioned and brimming with charm, this substantial 1920s California bungalow is located in a highly desirable family setting a short walk to Clovelly Road cafes and idyllic Gordons Bay. Opening out to unexpectedly deep established gardens, this comfortable and inviting home offers scope to reconfigure the interiors with ample room to further extend. Ideal for those looking for a great sized home in a prized coastal setting, it's ideal to live in and enjoy as is while contemplating further improvements.

**View :** <https://www.coogee realestate.com.au/sale/nsw/eastern-suburbs/coogee/residential/house/5902883>

### Features Include

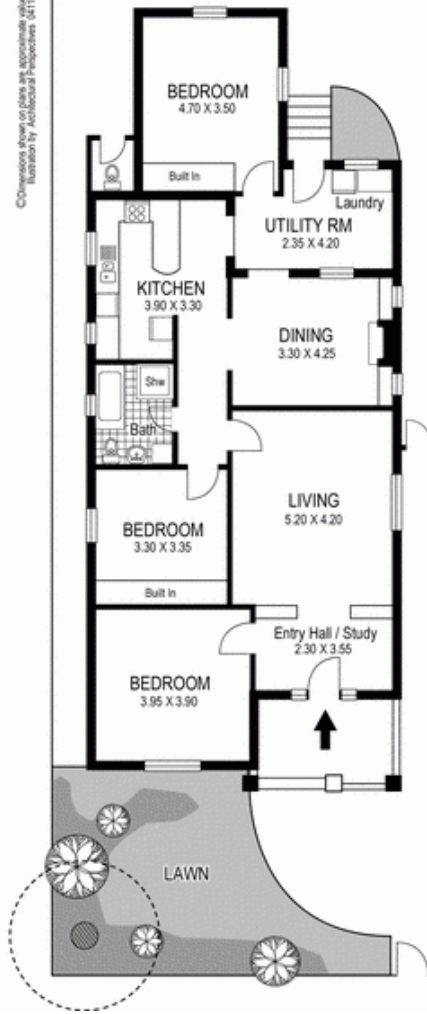
- Deep private front garden & tessellated tile verandah
- Spacious living room with adjoining study/sitting area
- Double bedrooms, 2 with built-ins, fresh family bathroom
- Sunny integrated modern gas kitchen with breakfast bar
- Charming dining/family room, rear sunroom or play room



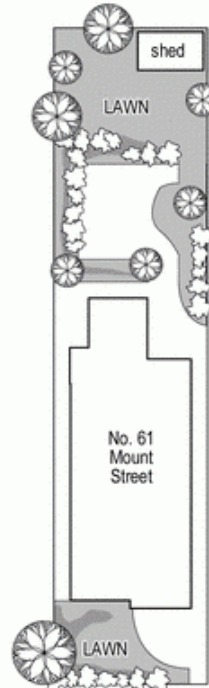
**James Giltinan**  
02 9665 3341

Dimensions shown on plans are approximate values in L x W.  
Illustration by Architectural Perspectives (0411) 2650.

REFER TO SITE PLAN  
FOR FULL EXTENT OF BACKYARD



Tel. (02) 9665 3341 Fax. (02) 9315 8704



Plans shown are for presentation purposes and are not part of any legal document or title.  
They are not intended to be used as a basis for any legal proceedings or other reference.  
Interested parties should make their own enquiries using other sources approved.



NORTH

61 Mount Street  
COOGEE