

CRE



37 Coldstream Street COOGEE NSW

2 2 2

Quietly positioned in a leafy coastal enclave between cosmopolitan Coogee Beach and Maroubra's retail hub, this refurbished wide-fronted semi is set over two levels with views to the Pacific Ocean. Redesigned to maximise the outlook with a focus on low-maintenance living, it offers fluid light filled open plan interiors cooled by refreshing ocean breezes and enhanced by original features. Ideal for the young family or those looking to downsize, it features a versatile attic retreat ideal as a study or rumpus room.

Features Include

- Classic 7m fronted semi wrapped in sunny easy care gardens
- Spacious open plan living & dining with polished timber floors
- Generous sunroom/family living with sweeping ocean views

Land Size : 253 sqm

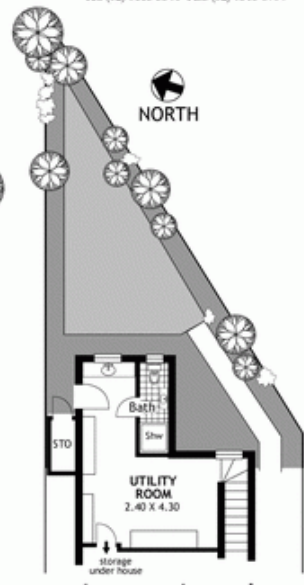
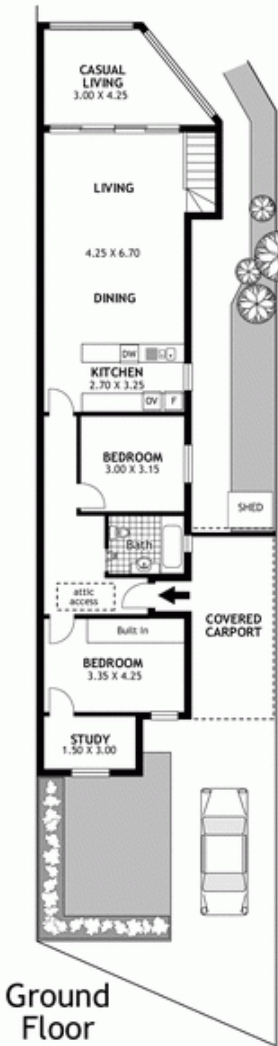
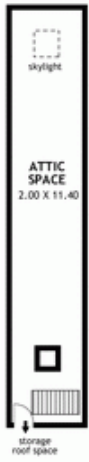
View : <https://www.coogee realestate.com.au/sale/nsw/eastern-suburbs/coogee/residential/house/5902802>



James Giltinan
02 9665 3341

© Dimensions shown on plan for approximate only. Illustration by Architectural Perspectives Pty Ltd.

Plans shown are for information purposes and are not part of any legal document or offer. They are subject to errors, omissions, alterations, amendments and should not be used in sale and mortgage transactions. Technical plans with fixtures and fittings and requirements may be available upon request.



Lower Level

**37 Coldstream Street
SOUTH COOGEE**

Ground Floor